

Electric Submersible Sewage Pumps  
Ranges K, KX

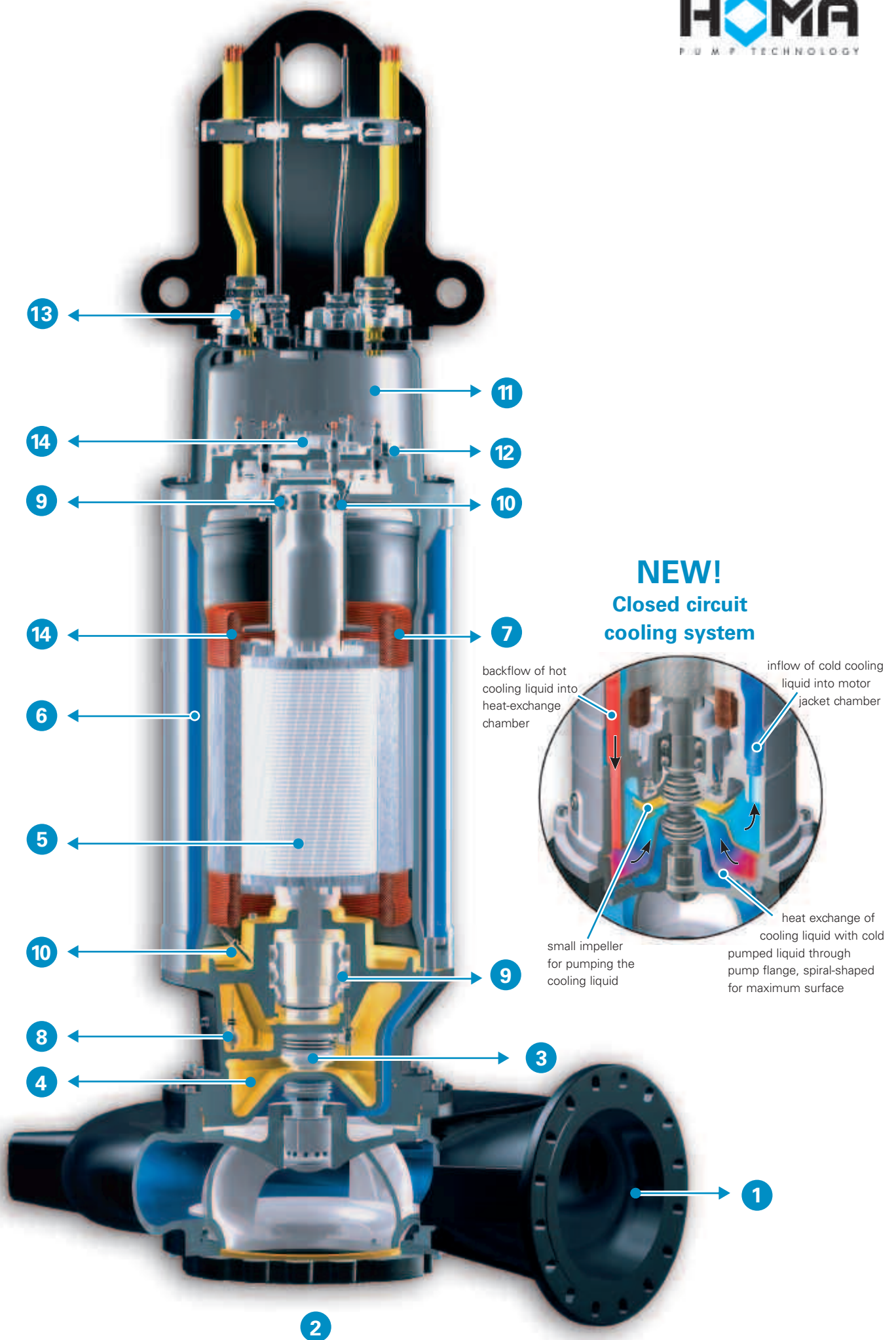


Discharge Size  
DN 200 up to DN 500



### **The reliability of fully automatic operation**

**HOMA** waste water pumping stations feature fully automatic control and monitoring. Reliable liquid level control systems of various types (float switch, pneumatic, ultrasound or electronic systems) are available to secure reliable pump operation at minimum energy consumption. All possible fault factors like shaft seal condition, temperatures, moisture or power supply can be automatically monitored and transferred to various alarm systems.



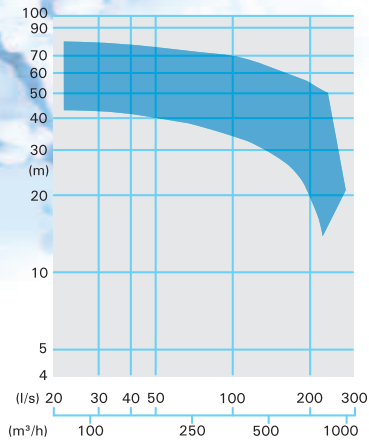
# Pump ranges selection chart

## DN200

**KX 44... 4-pole**



Enclosed two channel impeller  
100 mm Ø  
Spherical clearance  
1470 rpm  
[see page 10](#)

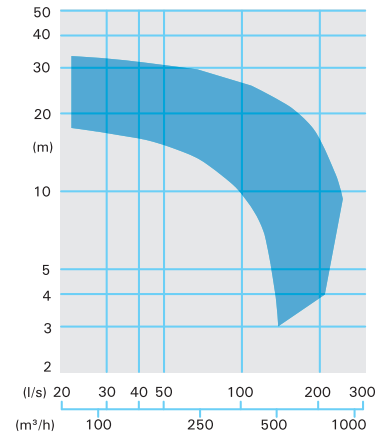


## DN200

**KX 44... 6-pole**



Enclosed two channel impeller  
100 mm Ø  
Spherical clearance  
960 rpm  
[see page 11](#)

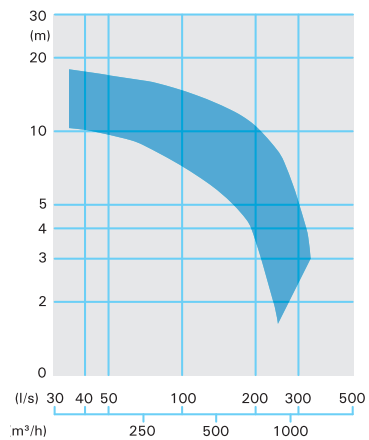


## DN250

**K 55... 6-pole**



Enclosed two channel impeller  
130 mm Ø  
Spherical clearance  
960 rpm  
[see page 12](#)

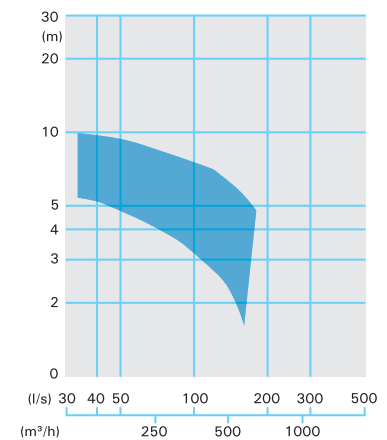


## DN250

**K 55... 8-pole**



Enclosed two channel impeller  
130 mm Ø  
Spherical clearance  
720 rpm  
[see page 13](#)

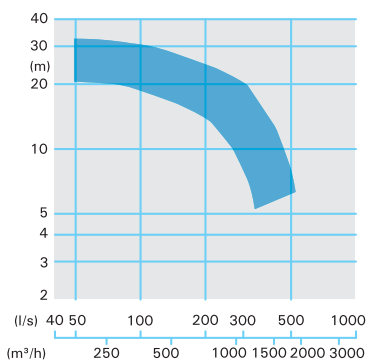


## DN300

**KX 66... 6-pole**



Enclosed two channel impeller  
150 mm Ø  
Spherical clearance  
960 rpm  
[see page 14](#)

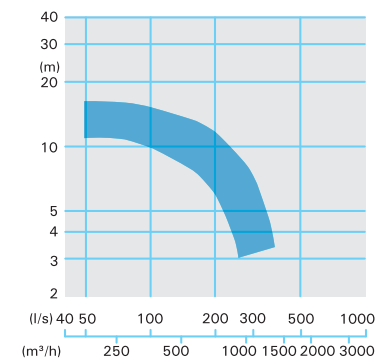


## DN300

**KX 66... 8-pole**



Enclosed two channel impeller  
150 mm Ø  
Spherical clearance  
720 rpm  
[see page 15](#)

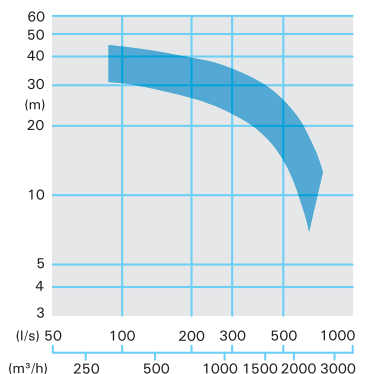


## DN400

**KX 86... 6-pole**



Enclosed two channel impeller  
165 mm Ø  
Spherical clearance  
960 rpm  
[see page 16](#)

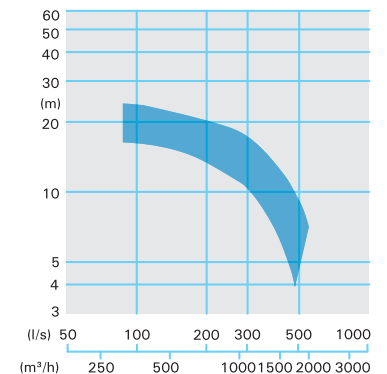


## DN400

**KX 86... 8-pole**



Enclosed two channel impeller  
165 mm Ø  
Spherical clearance  
720 rpm  
[see page 17](#)

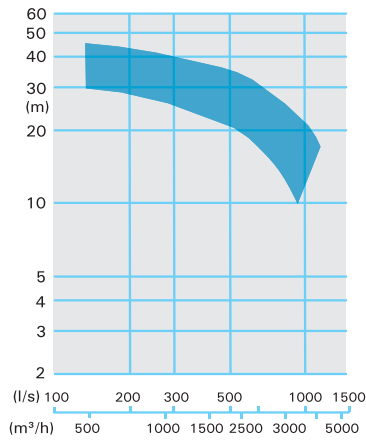


## DN500

**KX 108... 8-pole**



Enclosed two channel impeller  
200 mm Ø  
Spherical clearance  
740 rpm  
[see page 18](#)

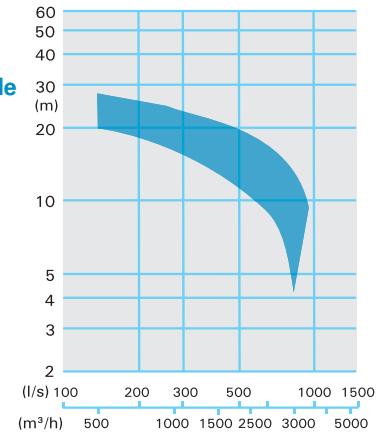


## DN500

**KX 108... 10-pole**



Enclosed two channel impeller  
200 mm Ø  
Spherical clearance  
590 rpm  
[see page 19](#)

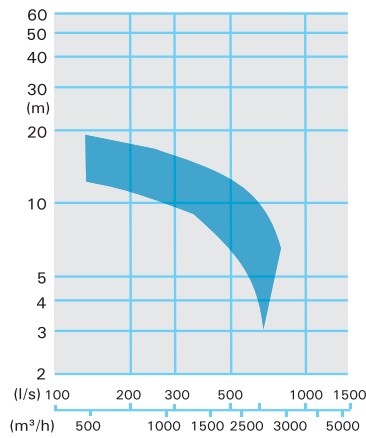


## DN500

**KX 108... 12-pole**



Enclosed two channel impeller  
200 mm Ø  
Spherical clearance  
490 rpm  
[see page 20](#)



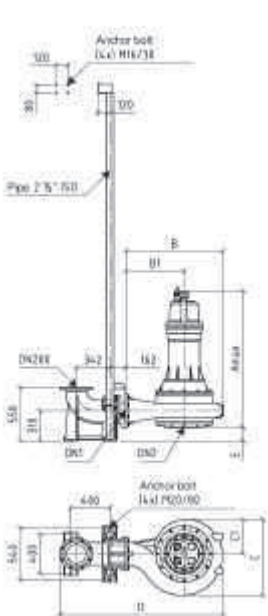
# Installations and Dimensions

Pump type	DN1	DN2	DN2*	DN3	Amax	B	B1	C	C1	D	E	F1	F2	F3	øG	H	J1
KX44(68-80)-G(U)... 4(Ex)	200	200	250	200	1518	878	550	650	291	1552	160	250	400	767	600	1417	369
KX44(76-83)-H(U)... 4(Ex)	200	200	250	200	1673	878	550	650	291	1552	160	250	400	767	600	1417	369
KX44(68-83)-F(U)... 6(Ex)	200	200	250	200	1333	878	550	650	291	1552	160	250	400	767	600	1417	369
KX4483-G(U)136(Ex)	200	200	250	200	1388	878	550	650	291	1552	160	250	400	767	600	1417	369
KX44(85-92)-H(U)... 4(Ex)	200	250	300	200	1695	1000	600	779	353	1674	138	250	422	789	800	1539	369
KX44(85-92)-G(U)... 6(Ex)	200	250	300	200	1535	1000	600	779	353	1674	138	250	422	789	800	1539	369
K55(64-76)-F(U)... 6(Ex)	250	250	300	250	1363	892	530	741	320	1681	155	250	420	869	800	1577	449
K55(74-76)-G(U)... 6(Ex)	250	250	300	250	1418	892	530	741	320	1681	155	250	420	869	800	1577	449
K55(64-76)-F(U)... 8(Ex)	250	250	300	250	1363	892	530	741	320	1681	155	250	420	869	800	1577	449
KX66(78-86)-G(U)... 6(Ex)	300	350	-	300	1593	1100	630	915	386	1946	145	300	505	1030	1000	1880	527
KX66(89-95)-H(U)... 6(Ex)	300	350	-	300	1773	1100	630	915	386	1946	145	300	505	1030	1000	1880	527
KX66(80-95)-G(U)... 8(Ex)	300	350	-	300	1593	1100	630	915	386	1946	145	300	505	1030	1000	1880	527
KX86(100-102)-H(U)... 6(Ex)	400	400	-	400	1811	1500	880	1215	512	2702	167	-	-	-	-	-	-
KX86(104-110)-R(U)... 6(Ex)	400	400	-	400	2894	1500	880	1215	512	2702	167	-	-	-	-	-	-
KX86(100-110)-H(U)... 8(Ex)	400	400	-	400	1661	1500	880	1215	512	2702	167	-	-	-	-	-	-
KX108...	500	on request															

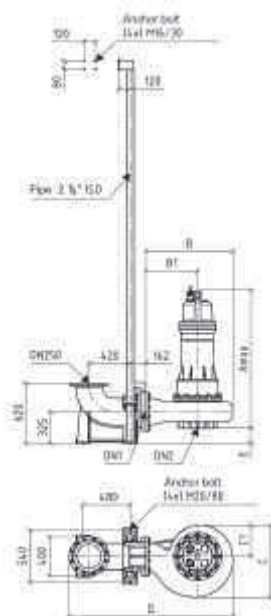
\* Vertical dry well installation (see accessories)

## Wet well installation with auto-coupling system

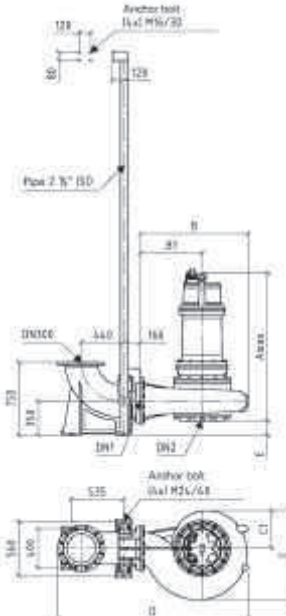
### DN200



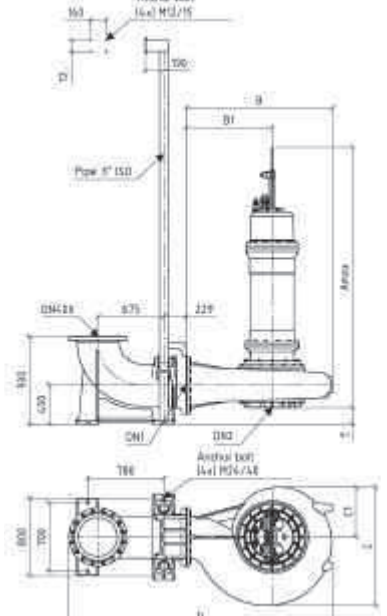
### DN250



### DN300

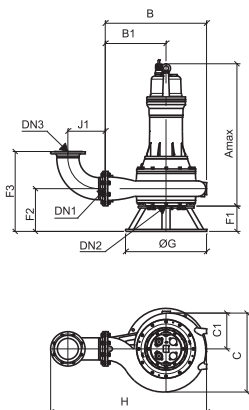


### DN400

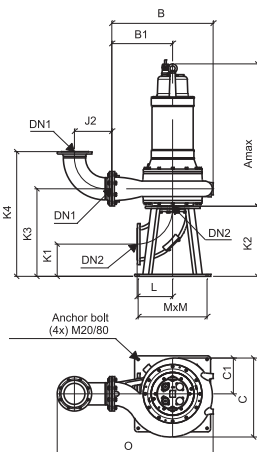


J2	K1	K1*	K2	K3	K4	L	MxM	O	P1	P2	Q	Rmax	S1	S3	Tmax	Umax	V1
369	301	301	692	842	1209	367	560x560	1417	350	900	150	1533	500	120	1256	1396	410
369	301	301	692	842	1209	367	560x560	1417	350	900	150	1688	500	120	1440	1550	508
369	301	301	692	842	1209	367	560x560	1417	350	900	150	1345	500	120	1118	1228	360
369	301	301	692	842	1209	367	560x560	1417	350	900	150	1403	500	120	1156	1266	410
369	318	298	692	864	1231	350	680x680	1539	430	1030	172	1710	450	120	1440	1550	508
369	318	298	692	864	1231	350	680x680	1539	430	1030	172	1550	450	120	1281	1391	410
449	318	298	692	862	1311	350	680x680	1553	400	930	170	1375	490	125	1128	1248	360
449	318	298	692	862	1311	350	680x680	1553	400	930	170	1250	490	125	1003	1123	360
449	318	298	692	862	1311	350	680x680	1553	400	930	170	1375	490	125	1128	1248	360
527	377	-	1002	1207	1732	602	900x900	1880	500	1130	205	1608	500	120	1306	1416	410
527	377	-	1002	1207	1732	602	900x900	1880	500	1130	205	1788	500	120	1486	1596	508
527	377	-	1002	1207	1732	602	900x900	1880	500	1130	205	1608	500	120	1306	1416	410
684	400	-	1111	1344	2025	682	-	2466	650	1530	233	1826	740	140	1496	1616	508
684	400	-	1111	1344	2025	682	-	2466	650	1530	233	2293	740	140	2021	2161	740
684	400	-	1111	1344	2025	682	-	2466	650	1530	233	1676	740	140	1346	1466	508

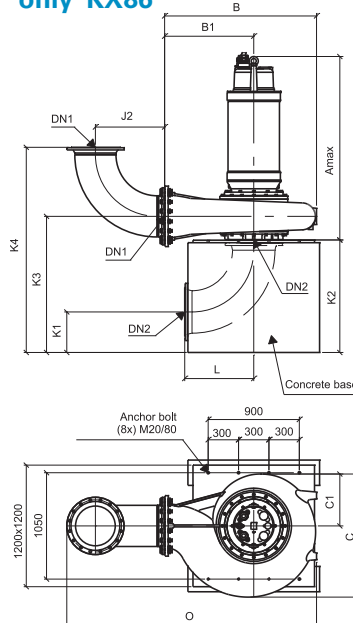
**Wet well installation with base stand only**  
**KX44**  
**K55**  
**KX66**



**Dry well installation vertical with base stand only**  
**KX44**  
**K55**  
**KX66**



**Dry well installation vertical with concrete base only**  
**KX86**



**Dry well installation horizontal**

